

47/44

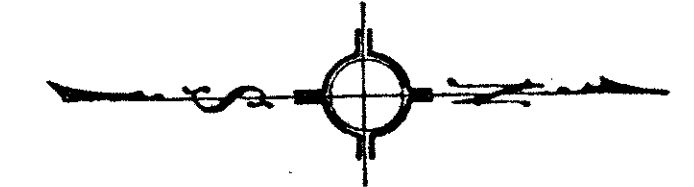
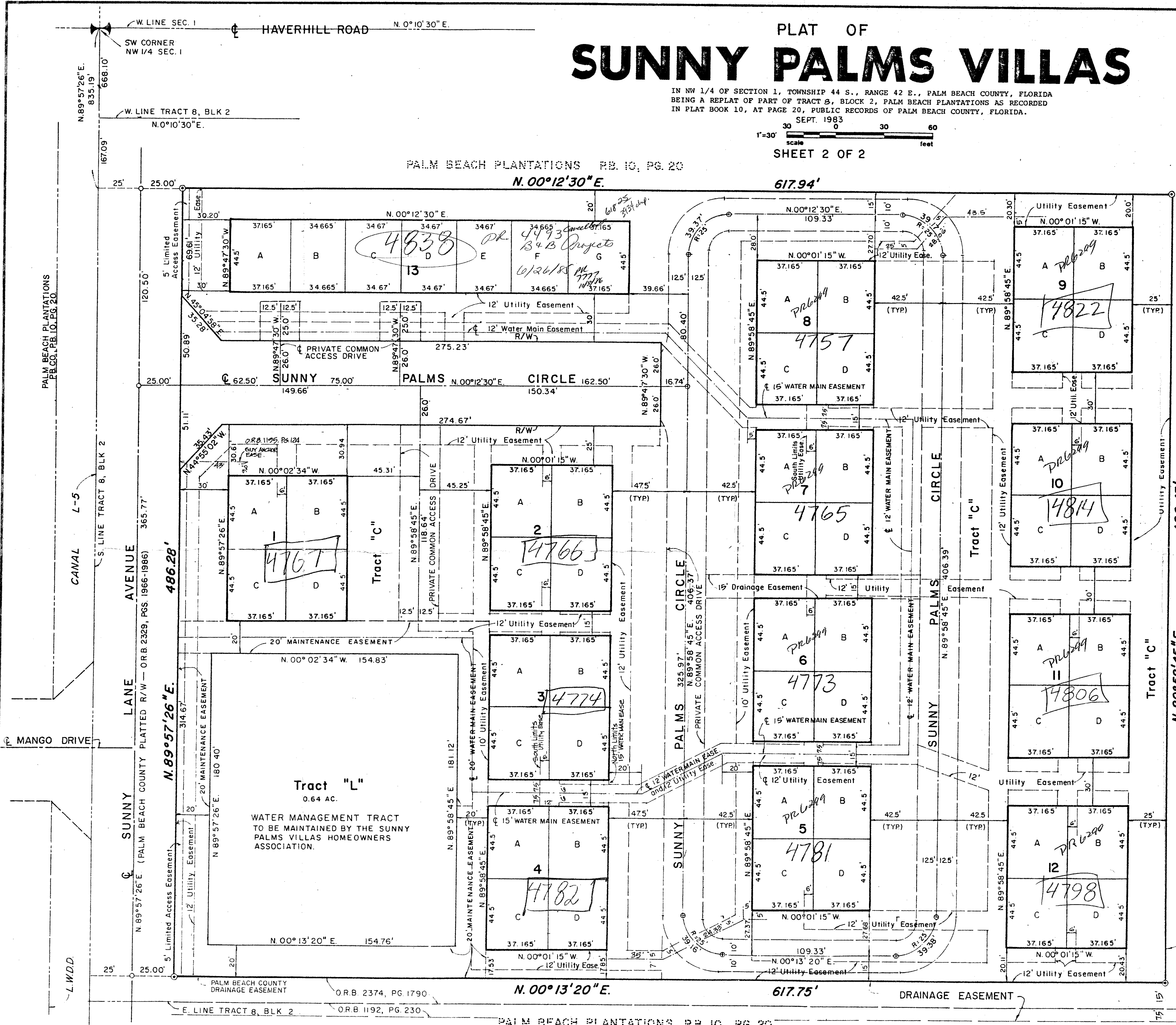
44

PLAT OF SUNNY PALMS VILLAS

IN NW 1/4 OF SECTION 1, TOWNSHIP 44 S., RANGE 42 E., PALM BEACH COUNTY, FLORIDA
BEING A REPLAT OF PART OF TRACT B, BLOCK 2, PALM BEACH PLANTATIONS AS RECORDED
IN PLAT BOOK 10, AT PAGE 20, PUBLIC RECORDS OF PALM BEACH COUNTY, FLORIDA.
SEPT. 1983

1"=30'
Scale
SHEET 2 OF 2

PALM BEACH PLANTATIONS PB. 10, PG. 20
N. 00°12'30" E. 617.94'



0314-001

32

47/44

486.28'
486.43'
N. 89°58'45" E.
GUN CLUB COLONY
PB. 29, PG. 249
SOUTH LINE OF GUN CLUB COLONY.
NORTH LINE OF SOUTH HALF-TRACT B
PALM BEACH PLANTATIONS,
PB. CO., PB. 10, PG. 20.

FAIR SHARE ZONE - 19
FLOOD ZONE - NO
T/H File under Herbert, Michael
(Sunny Palms Villas)